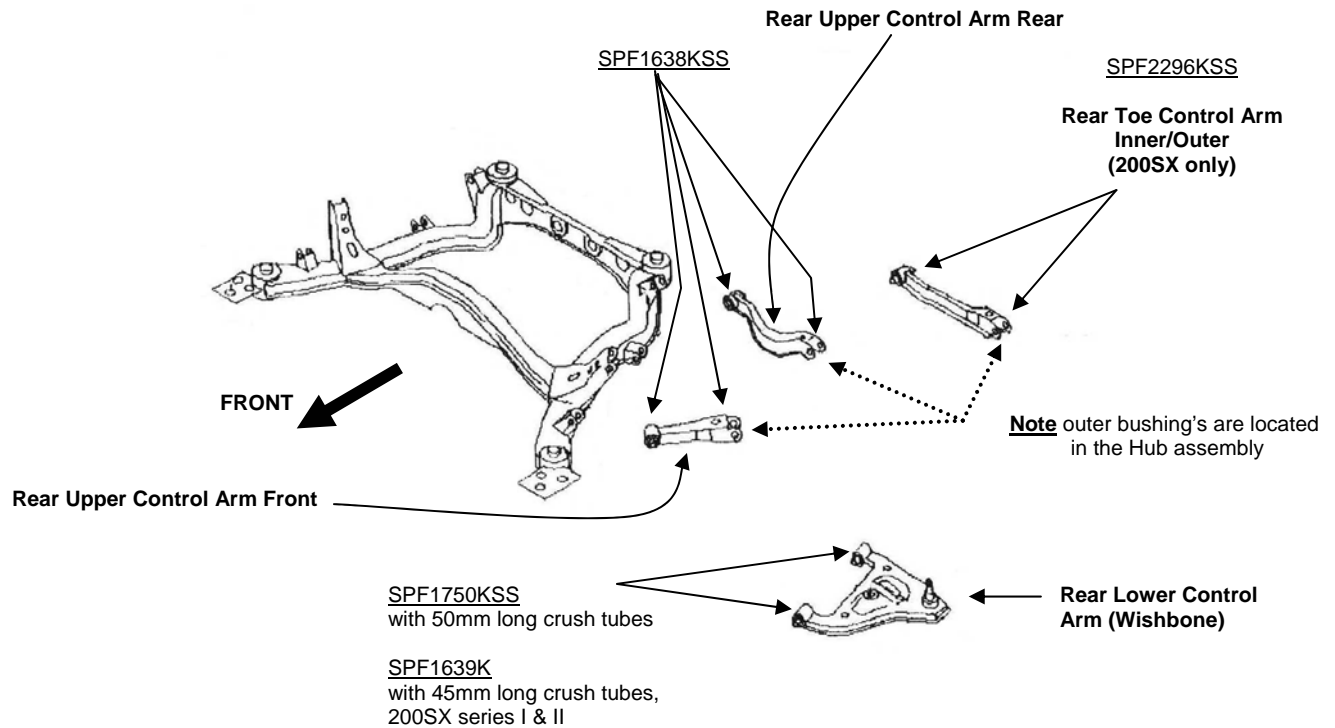


NISSAN 200SX, SILVIA S13, S14, S15, SKYLINE R32, R33, R34

REAR SUSPENSION



Drawing above is 200SX S14 and S15 chassis

SuperFlex bushings are a replacement for worn parts and an upgrade to improve handling and performance of the rear suspension.

SPF1869K kit is designed to fit in the upper control arms as an alternative to SPF1638KSS and offers up to $1\frac{1}{2}^{\circ}$ extra camber correction for lowered vehicles.